

PARISIAN
CAFES
DANCE HALLS
CABARETS
CIRCUSES & BROTHELS



QUAND

QUOI

QUEL

OÙ

PARISIAN
CAFES

DANCE HALLS

CABARETS

CIRCUSES & BROTHELS



M _____

_____ WILL ATTEND

_____ WILL NOT ATTEND



Please RSVP by December 9

The National Gallery of Art
invites you and a guest

FRIDAY, DECEMBER 16, 2005

COCKTAILS & HORS D'ŒUVRES 6:30-7:30PM

PRIVATE EXHIBITION TOUR 7:30-10:00PM

Please RSVP by December 9

QUAND

QUOI

QUEL

OÙ

TOULOUSE-LAUTREC & MONTMARTE

The art of Henri de Toulouse-Lautrec (1864-1901) is inseparable from Montmartre, the working-class district on the outskirts of Paris where the artist lived for most of his career. In the late nineteenth century, Montmartre became the heart of a daring, often racy, entertainment industry that lured thrill-seeking Parisians to its dance halls and cabarets, circuses and brothels.

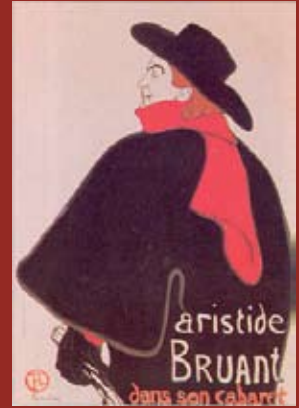
Artists' fascination with the decadent spirit and glamour of bohemian life in Montmartre is the focus of this major exhibition of more than 250 works, primarily by Toulouse-Lautrec. Other artists, include his predecessors Edgar Degas and Edouard Manet; his contemporaries Pierre Bonnard, Vincent van Gogh, and Pablo Picasso; and poster artist Jules Chéret.

QUOI

QUEL

OÙ

Aristide Bruant is one of Toulouse-Lautrec's most famous images. Bruant, the owner of the famous Chat Noir, entertained nightly with witty songs and sketches. Toulouse-Lautrec has captured his aloof attitude with his black velvet suit, bright red scarf and large hat.



Moulin Rouge: La Goulue was Toulouse-Lautrec's initial foray into lithography. Critics and the general public alike were struck by the poster's modern sensibility; it includes bold colors, a variety of lettering style, and innovative use of silhouettes. The poster advertises the Moulin Rouge dance hall and its featured performer La Goulue. By advertising a specific celebrity rather than anonymous beauties, Toulouse-Lautrec infused his poster with star power.

QUEL

OU

NATIONAL GALLERY OF ART

Located on the National Mall between
3rd and 9th Streets at Constitution Avenue, NW

Public Transportation

The nearest Metro stops are Judiciary Square on the Red Line, Archives on the Yellow/Green Lines, and Smithsonian on the Blue/Orange Lines.

Parking and Accessibility

Public parking is limited to the surrounding streets and commercial garages.

For additional information
please visit www.nga.gov
or call (202) 737-4215.



00